

## Access from the Airport

The closest airport is Seattle-Tacoma International Airport (SEA). Taxis or other livery services are available, but we strongly suggest using public transportation to get to the conference hotel unless you are arriving late in the evening or have bulky luggage. A rental car is not recommended due to the potentially heavy traffic near downtown.

### *Public Transportation Directions:*

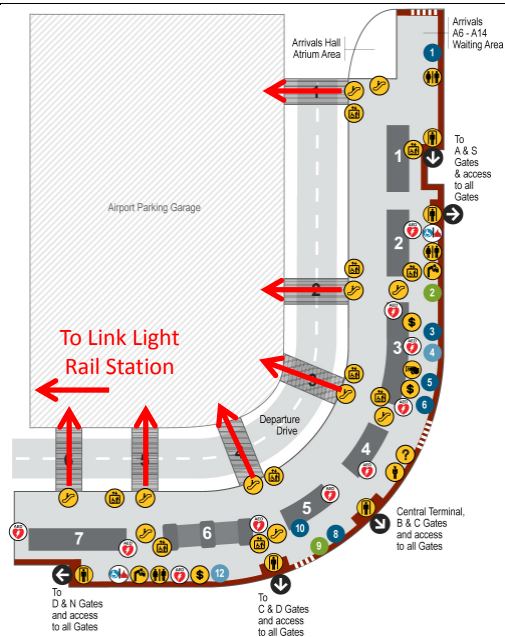
Trains run every 15 minutes or less from 5 AM to midnight to Westlake Station. From Westlake Station, you can take a short walk to the hotel (about 7 short city blocks, 7-10 minutes) or hail a taxi (should be about \$5 plus tip).

#### 1) Getting to the link light rail station

Depending upon where you are arriving from, when you exit the secured gate area you might find yourself in either a) the baggage claim area on the lower level or b) near the ticketing counters on the main level. If you are in baggage claim, head upstairs to the main level.

Once on the main level, follow the signs towards the “Link Light Rail”. There are a number of escalators heading up on the main level. These lead to one of 6 skybridges that cross the main departures dropoff driveway.

Once on the other side of the skybridge, you will find yourself in the parking garage. Turn left and follow the walkway to the link light rail station.



#### 2) Getting to Westlake Station

Before you board the train, purchase a ticket from one of these machines. The fare is \$2.75 and credit cards or cash are accepted. Select “Downtown Seattle -> Westlake”.

Ticket in hand, head upstairs to board the train.

Westlake station is the last stop, approximately 35 minutes away from the airport



### 3) Arriving at Westlake Station

When you exit the train, turn right and head up the escalators towards the “3<sup>rd</sup> Avenue & Pine St” exit.

Once at the top of the escalators, bear right again and exit the train station.

If you exited the correct door of the train station, you will be on the north side of Pine Street (the same side of the street as Macy’s department store).



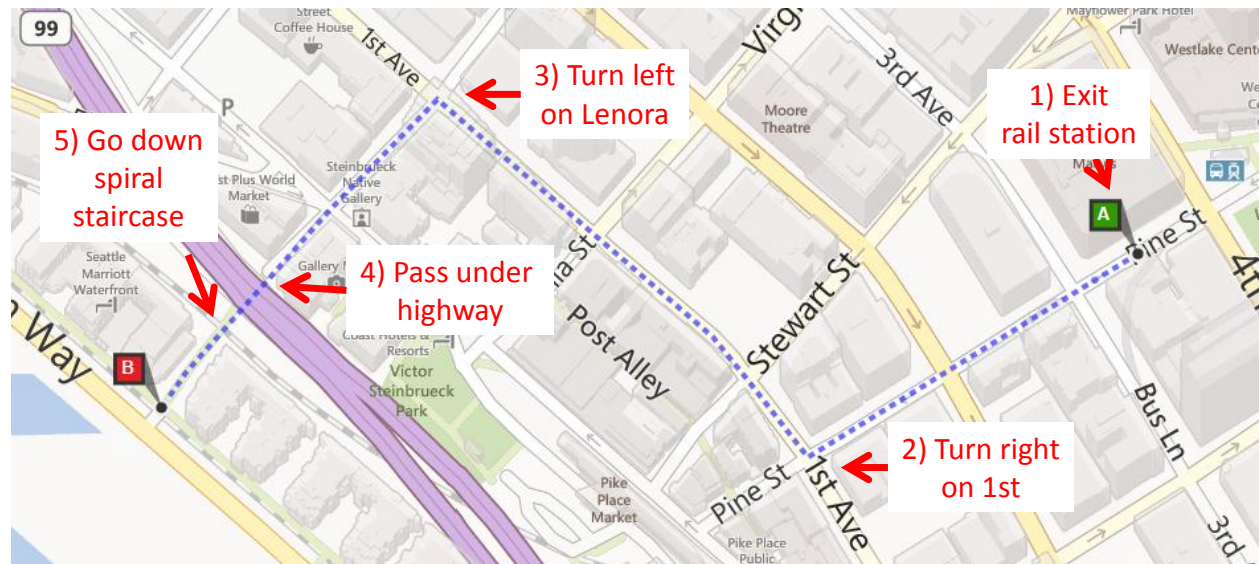
### 4) Getting to the hotel!

The walk to the hotel is quick, but if the weather is particularly poor you may want to hail one of the plentiful taxis outside of the rail station.

The Marriott Waterfront is at 2100 Alaskan Way.

If you plan to walk, turn right out of the rail station and head southwest following the map below.

Link to detailed directions - <http://binged.it/158uq4J>



### Taxi Directions:

The fare to all downtown hotels should be roughly \$50 for up to 3 or 4 people. The fare from all downtown hotels to the airport is fixed at \$40.

The taxi stand at the airport is on the 3<sup>rd</sup> floor of the parking garage. Follow step #1 from the public transportation directions above, crossing the skybridge to enter the parking garage on the 4<sup>th</sup> floor. Rather than following the walkway to the train station, take an escalator down one floor to find the taxi stand. The Marriott Waterfront is at 2100 Alaskan Way in downtown Seattle.